









DR-100 Voyage Data Recorder (VDR)

ALL IN ONE

-  Easy to install and maintenance
-  Flexible and extendible
-  Low hardware cost
-  High reability and stability
-  High service quality
-  Comply with the latest standarts



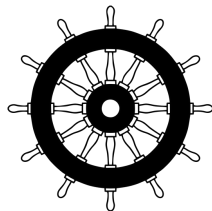


REQUIRED ONES FOR VDR

- Equipped capsule of fixed type and float free type
- Download data up to 48 hours in FPC and FFC
- Recording up to 48 hours data in DAU
- Recording up to 720 hours data in LRU
- Image recording of up to 4 channel Radar / ECDIS
- Recording of all sensor data
- Audio recording up to 10 ch of Bridge Audio
- Audio recording up to 2 ch of VHF Audio
- Process up to 64 ch on digital inputs
- Process up to 16 ch on serial inputs
- Process up to 8 ch on analog inputs
- Live Player software allows for real-time data monitoring as well as data playback with a PC at later time

STANDARDS

- EN 60945:2002 incl. IEC 60945 Corr.1:2008
- EN 61162-1:2016
- EN 61162-2:1998
- EN 61162-3:2008+A1:2010+A2:2014
- EN 61162-450:2018
- EN 61996-1:2013+A1:2021
- EN 62288:2022
- EN 62923-1:2018
- EN 62923-2:2018



REGULATIONS

- SOLAS 74 Reg. V/18
- SOLAS 74 Reg. X/3
- SOLAS 74 Reg. V/20
- IMO Res. MSC.36(63)-(1994 HSC Code) 13
- IMO Res. MSC.97(73)-(2000 HSC Code) 13
- IMO Res. A.694(17)
- IMO Res. MSC.191(79)
- IMO Res. MSC.302(87)





DR-100 TECHNICAL SPECIFICATIONS

Name	Voyage Data Recorder (VDR) System
Model	DR-100
Remote Control Unit	LCD Display, Built-in Speaker, Membrane Keypad, Illumination, Touch Panel
Model	DR-206

Sensor Data	Wind speed and direction, Watertight and fire door status, Rudder order and response etc.	
Audio Data	Microphone, VHF	
Image Data	Radar / ECDIS	
Recording Time	DAU (Data Acquisition Unit)	Up to 48 hours Data Recording,
	LRU (Long-Term Recording Unit)	Up to 720 hours Data Recording
	FPC (Fixed Protective Capsule)	Up to 48 hours Data Recording
	FFC (Float Free Capsule)	Up to 48 hours Data Recording
Data Recording Interval	Sensor Data	Depends on the Input from Sensor
	Audio Data	Continuous
	Image Data	1 Image / 15 Seconds

Interface	61182-1, 61182-2, 61182-3, 61182-450
Digital Inputs	Up to 64 Channel
Analog Inputs	Up to 8 Channel
Serial Inputs	Up to 16 Channel
Microphone Audio Input	10 Channel
VHF Audio Input	2 Channel
Radar / ECDIS Input	Up to 4 Channel / UDP or VGA / DVI / HDMI / YPbPr

Data Acquisition Unit	AC 100 - 240V, 10A, 50/60HZ
DAS Module	DC 24V -/ Supply from DAU
Remote Control Unit	DC 24V -/ Supply from DAU
Microphone Units	DC 24V -/ Supply from DAU
Ship's Emergency Supply	DC 21.6 - 33.6V, 13.5A, 50/60HZ
Fixed Protective Capsule	DC 24V -/ Supply from DAU
Float Free Capsule	DC 24V -/ Supply from DAU

DR-100 STANDART EQUIPMENT LIST

NO	Component	Part	DR-100
1	DAU (Data Acquisition Unit)	DR-100	1 Pcs
2	RCU (Remote Control Unit)	DR-206	1 Pcs
3	IMU (Indoor Microphone Unit)	DR-101	4 Pcs
4	OMU (Outdoor Microphone Unit)	DR-117	2 Pcs
5	DAS (Digital - Analog- Serial) Module	DR-212	1 Pcs
6	FPC (Fixed Protective Capsule)	OVM-6000	1 Pcs
7	FFC (Float Free Capsule)	OVM-1000	1 Pcs

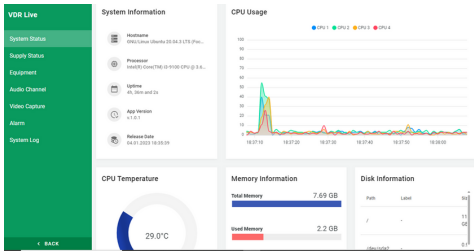




VDR APP

DR-100 has a unique software designed for maximum performance. Users are able to view live data by using VDR application.

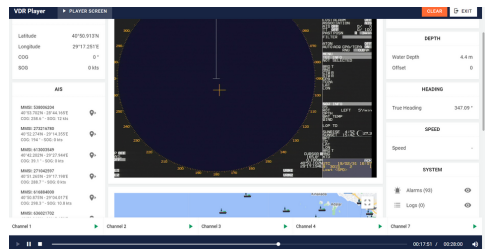
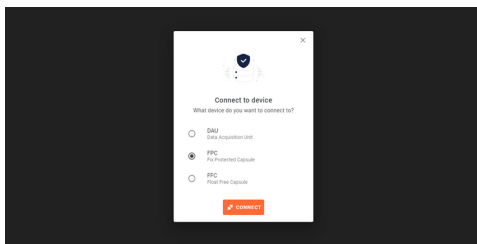
Live Data Screen

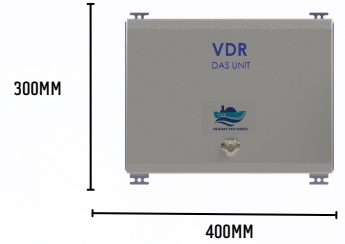
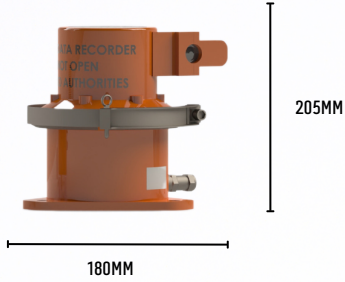
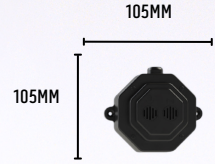
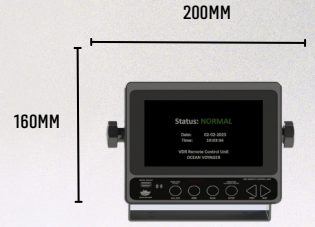


Name	Port	Address	Timestamp
Gyro	/dev/ttyS0	BMH4736.6.7145	2023-03-27T18:40:51.544995
Gyro	/dev/ttyS0	BMH4736.7.3419	2023-03-27T18:40:51.499143
Gyro	/dev/ttyS0	BMH4736.0.0.0.12.0.0.42712	2023-03-27T18:40:51.449993
Gyro	/dev/ttyS0	BMH4736.6.7145	2023-03-27T18:40:50.548339
Gyro	/dev/ttyS0	BMH4736.7.3419	2023-03-27T18:40:50.502309

Configuration Screen

Player Screen





VDR

OCEAN VOYAGER MARINE

General : info@oceanvoyagermarine.com

Sales : sales@oceanvoyagermarine.com

Web : www.oceanvoyagermarine.com

Phone : (0216) 759 68 17

Address : Güzelyalı Mah. Sahil Blv No: 88/2, 34903 Pendik / İstanbul

