

NAVIGATING, ELEVATING, POWERING.



OVM-300 SPEED LOG

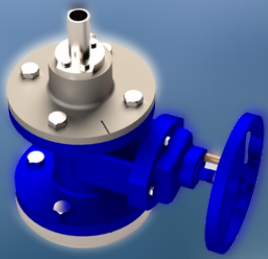
We're thrilled to introduce the OVM-300, a state-of-the-art Speed Log meticulously engineered to offer an array of exceptional functionalities. Complying rigorously with maritime regulations, the OVM-300 is designed with user-friendliness in mind and built to withstand the test of time, ensuring that you have the perfect tool for precise speed measurements. At Ocean Voyager, we place a high priority on affordability while maintaining unwavering commitment to quality. With the OVM-300, you can expect not only accuracy and reliability but also cost-effectiveness in your navigation needs. Trust the OVM-300 for a dependable, efficient, and budget-friendly navigation solution that exceeds your expectations.

VSU-305

ECU-305

CDU-305

ESU-305



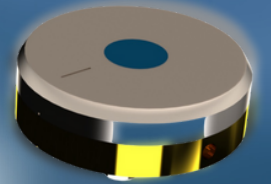
VALVE
SENSOR
UNIT



ELECTRONIC
CONTROL
UNIT



CONTROL
DISPLAY
UNIT



EASY
SENSOR
UNIT

NEXT GENERATION SPEED LOG

Name	Speed and Distance Measuring Equipment
Measurement Speed Range	-10.0 - +40.0 Kn
Distance Measurement Range	0,00 to 999999,99 NM
Ship Speed Measurable Depth	3 M or deeper below ship bottom
Output Ship Speed	1- axis to water speed
Power Supply	100 - 240V AC - 50/60Hz
Display Unit	24V DC, 4,3 inch, color LCD
Interface	2 port serial and 1 port LAN
Type Approval Requirements	SOLAS 74 Reg. V/18, SOLAS 74 Reg. X/3, IMO Res. MSC.36(63)-(1994 HSC Code) 13, IMO Res. MSC.97(73)-(2000 HSC Code) 13
Performance Requirements	SOLAS 74 Reg. V/19, IMO Res. A.694(17), IMO Res. A.824(19), IMO Res. MSC.36(63)-(1994 HSC Code) 13, IMO Res. MSC.97(73)-(2000 HSC Code) 13, IMO Res. MSC.191(79), IMO Res. MSC.302(87)
Standarts	EN 60945:2002 incl. IEC 60945 Corr. 1:2008, EN 61023:2007, EN 61162-1:2016, EN 61162-2:1998, EN 61162-3:2008 +A1:2010+A2:2014 EN IEC 61162-450:2018, EN IEC 62923-1:2018, EN IEC 62923-2:2018