









DR-100 Voyage Data Recorder (VDR)

ALL IN ONE

-  Easy to install and maintenance
-  Flexible and extendible
-  Low hardware cost
-  High reability and stability
-  High service quality
-  Comply with the latest standarts



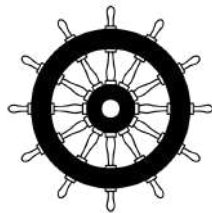


REQUIRED ONES FOR VDR

- Equipped capsule of fixed type and float free type
- Download data up to 48 hours in FPC and FFC
- Recording up to 48 hours data in DAU
- Recording up to 720 hours data in LRU
- Image recording of up to 4 channel Radar / ECDIS
- Recording of all sensor data
- Audio recording up to 10 ch of Bridge Audio
- Audio recording up to 2 ch of VHF Audio
- Process up to 64 ch on digital inputs
- Process up to 16 ch on serial inputs
- Process up to 8 ch on analog inputs
- Live Player software allows for real-time data monitoring as well as data playback with a PC at later time

STANDARDS

- EN 60945:2002 incl. IEC 60945 Corr.1:2008
- EN 61162-1:2016
- EN 61162-2:1998
- EN 61162-3:2008+A1:2010+A2:2014
- EN 61162-450:2018
- EN 61996-1:2013+A1:2021
- EN 62288:2022
- EN 62923-1:2018
- EN 62923-2:2018



REGULATIONS

- SOLAS 74 Reg. V/18
- SOLAS 74 Reg. X/3
- SOLAS 74 Reg. V/20
- IMO Res. MSC.36(63)-(1994 HSC Code) 13
- IMO Res. MSC.97(73)-(2000 HSC Code) 13
- IMO Res. A.694(17)
- IMO Res. MSC.191(79)
- IMO Res. MSC.302(87)





DR-100 TECHNICAL SPECIFICATIONS		
Name	Voyage Data Recorder (VDR) System	
Model	DR-100	
Remote Control Unit	LCD Display, Built-in Speaker, Membrane Keypad, Illumination, Touch Panel	
Model	DR-206	
Sensor Data	Wind speed and direction, Watertight and fire door status, Rudder order and response etc.	
Audio Data	Microphone, VHF	
Image Data	Radar / ECDIS	
Recording Time	DAU (Data Acquisition Unit)	Up to 48 hours Data Recording,
	LRU (Long-Term Recording Unit)	Up to 720 hours Data Recording
	FPC (Fixed Protective Capsule)	Up to 48 hours Data Recording
	FFC (Float Free Capsule)	Up to 48 hours Data Recording
Data Recording Interval	Sensor Data	Depends on the Input from Sensor
	Audio Data	Continuous
	Image Data	1 Image / 15 Seconds
Interface	61162-1, 61162-2, 61162-3, 61162-450	
Digital Inputs	Up to 64 Channel	
Analog Inputs	Up to 8 Channel	
Serial Inputs	Up to 16 Channel	
Microphone Audio Input	10 Channel	
VHF Audio Input	2 Channel	
Radar / ECDIS Input	Up to 4 Channel / UDP or VGA / DVI / HDMI / YPbPr	
Data Acquisition Unit	AC 100 - 240V, 10A, 50/60HZ	
DAS Module	DC 24V -/ Supply from DAU	
Remote Control Unit	DC 24V -/ Supply from DAU	
Microphone Units	DC 24V -/ Supply from DAU	
Ship's Emergency Supply	DC 21.6 - 33.6V, 13.5A, 50/60HZ	
Fixed Protective Capsule	DC 24V -/ Supply from DAU	
Float Free Capsule	DC 24V -/ Supply from DAU	

DR-100 STANDART EQUIPMENT LIST			
NO	Component	Part	DR-100
1	DAU (Data Acquisition Unit)	DR-100	1 Pcs
2	RCU (Remote Control Unit)	DR-206	1 Pcs
3	IMU (Indoor Microphone Unit)	DR-101	4 Pcs
4	OMU (Outdoor Microphone Unit)	DR-117	2 Pcs
5	DAS (Digital - Analog- Serial) Module	DR-212	1 Pcs
6	FPC (Fixed Protective Capsule)	OVM-6000	1 Pcs
7	FFC (Float Free Capsule)	OVM-1000	1 Pcs

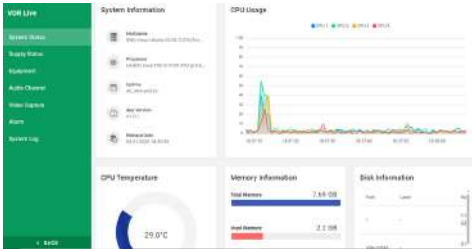




VDR APP

DR-100 has a unique software designed for maximum performance. Users are able to view live data by using VDR application.

Live Data Screen



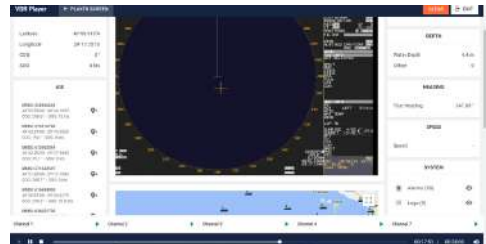
Time	Port	Message	Severity
2024-07-16 10:00:00	0000000000000000	System Status	Warning
2024-07-16 10:00:00	0000000000000000	System Status	Warning
2024-07-16 10:00:00	0000000000000000	System Status	Warning
2024-07-16 10:00:00	0000000000000000	System Status	Warning
2024-07-16 10:00:00	0000000000000000	System Status	Warning

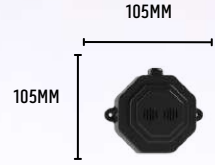
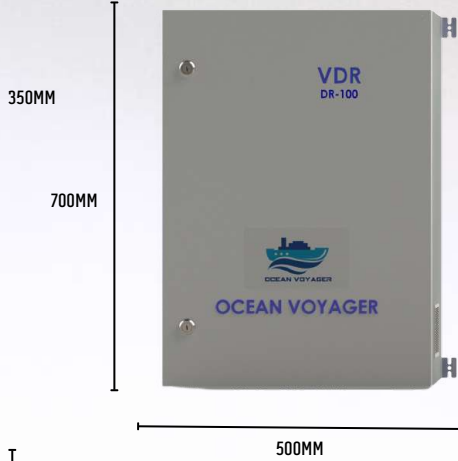
Configuration Screen

Device	Baud Rate	Parity	Stop Bits	Flow Control	Status
Cyclic AIS	9600	None	1	None	OK
Speed Log	9600	None	1	None	OK

Bridge	Status	Action
Bridge 1	OK	Test
Bridge 2	OK	Test
Bridge 3	OK	Test
Bridge 4	OK	Test
Port Bridge Wing	OK	Test
Starboard Bridge Wing	OK	Test

Player Screen





VDR

OCEAN VOYAGER MARINE

General : info@oceanvoyagermarine.com

Sales : sales@oceanvoyagermarine.com

Web : www.oceanvoyagermarine.com

Phone : (0216) 759 68 17

Address : Güzelyalı Mah. Sahil Blv No: 88/2, 34903 Pendik / İstanbul

